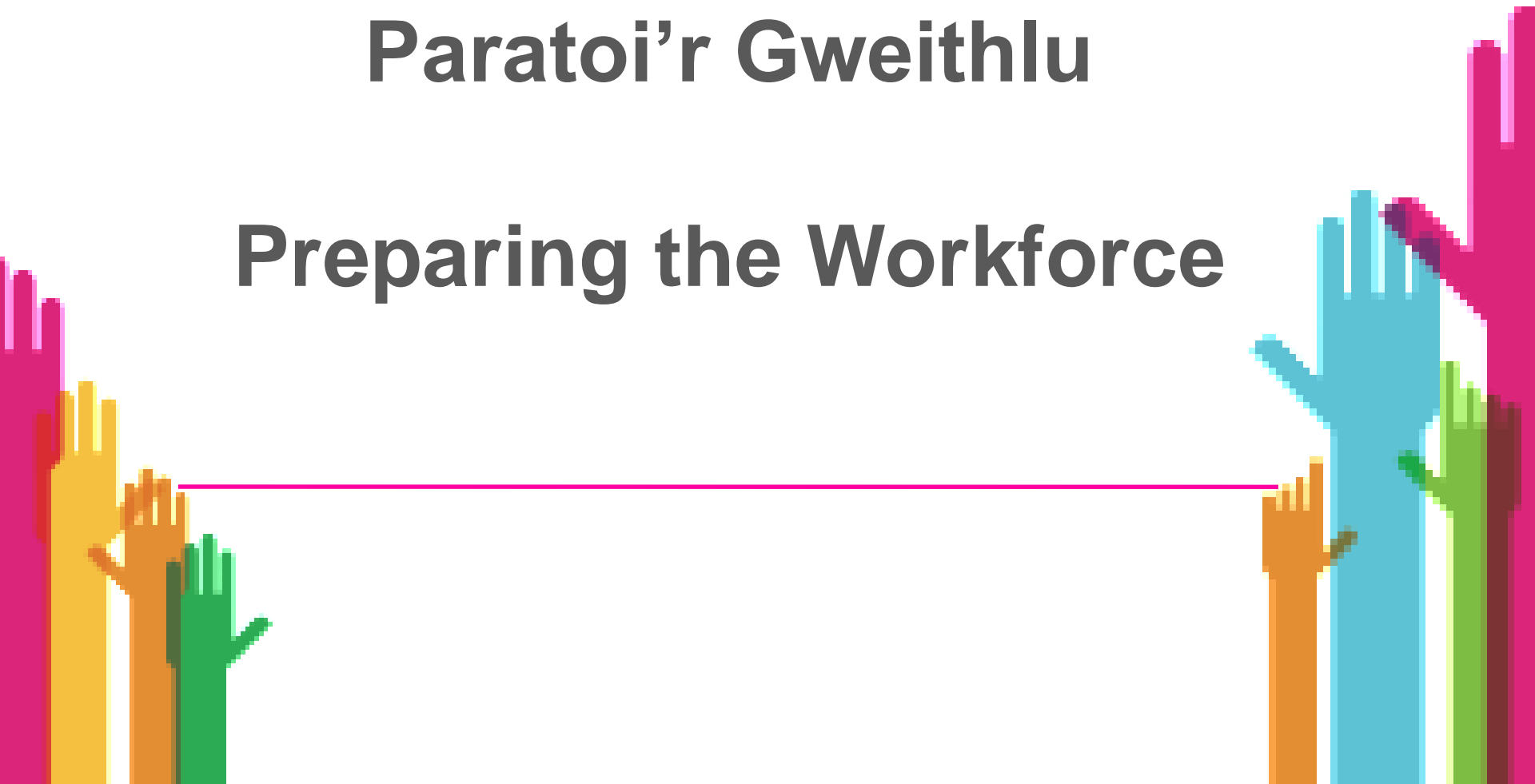




Paratoi'r Gweithlu

Preparing the Workforce



Y Dasg

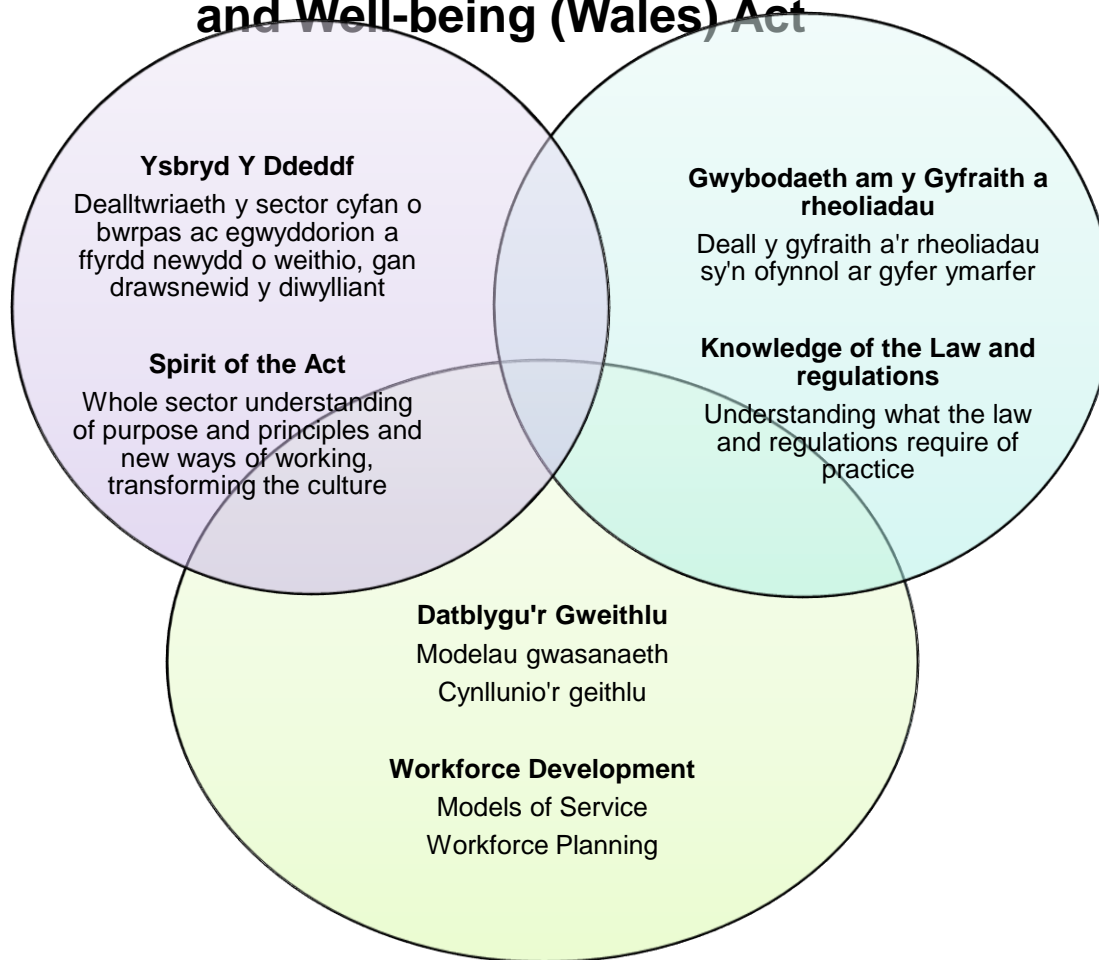
- Siop e-hwb un stop i gynnal yr holl adnoddau / gyfathrebiadau
- Datblygu cynllun dysgu a datblygu cenedlaethol (i gyd-fynd â'r amserlen ar gyfer gweithredu'r Ddeddf) a'i roi ar waith

The Task

- One stop shop e-hub to host all resources / communications
- Develop and implement a national learning and development plan (to match Act implementation timetable)



Learning and development for the implementation of the Social Services and Well-being (Wales) Act





Social Services and Well-being (Wales) Act INFORMATION AND LEARNING HUB

- HOME
- THE ACT
- LEARNING RESOURCES
- NEWS
- BULLETINS
- EVENTS
- CONTACT US

FIND OUT MORE ABOUT

Social Services and Well-being (Wales) Act

MORE >

Introduction

The Care Council for Wales (Care Council) has been tasked to work with a range of partners to develop a national learning and development plan to support the full implementation of the Social Services and Well-being (Wales) Act. The overall aim of this Welsh Government-funded initiative is to ensure the workforce is supported and informed to deliver social services in accordance with Welsh law, and its interface with other relevant statutes, and to practice in-line with the principles of the Act.

Cynllun dysgu Blwyddyn 1

- Cyflwyniad a phhecyn codi ymwybyddiaeth
- Y Sefydliad Gofal Cyhoeddus (IPC) wedi'i gomisiynu i ddatblygu deunyddiau manwl
- Archwilio deunyddiau sydd eisoes yn bodoli
- Rhestr Genedlaethol o Hyfforddwyr ar gyfer y Ddeddf – cymorth rhanbarthol ar gyfer cyflawni
- Deunyddiau ar gyfer staff gofal uniongyrchol (canolbwyntio ar egwyddorion)
- Deunyddiau cyd-gynhyrchu

Learning Plan Year 1

- Introduction and awareness raising pack
- Institute of Public Care developed 5 modules
- Audit of existing materials
- National List of Trainers for the Act – regional delivery
- Materials for direct care staff (focus on principles)
- Co-production materials



Strwythurau'r Prosiect

- **Gwreiddio** – parhau gyda'r darpariaeth o hyfforddiant i gynulleidfa ehangach
- **Ymestyn** – dosbarthiadau arbenigol, sesiynau manwl, arweinyddiaeth ymarfer
- **Arbenigol** – Canolbwyntio ar sgiliau penodol e.e. APSO
- **Cynaliadwy** – gwerthusiad, linc i ddeddfwriaeth arall – Deddf Rheoleiddio ac Arolygu Gofal Cymdeithasol

Learning Plan Year 2

- **Embed** – continued delivery of training to a wider target audience
- **Extend** – expert classes, in depth sessions, practice leadership
- **Specialist** – focus on particular skills e.g. APSO
- **Sustainable** – evaluation,, links to other legislation – Regulation and Inspection of Social Care Act





Hyder mewn Gofal - Confidence in Care

Hyb Gwybodaeth a Dysgu

<http://www.cgcmru.org.uk/hyb-deall-y-ddeddf/?force=2>

Roberta.hayes@cgcmru.org

Information and Learning Hub

<http://www.ccwales.org.uk/getting-in-on-the-act-hub/>

Roberta.hayes@ccwales.org.uk

